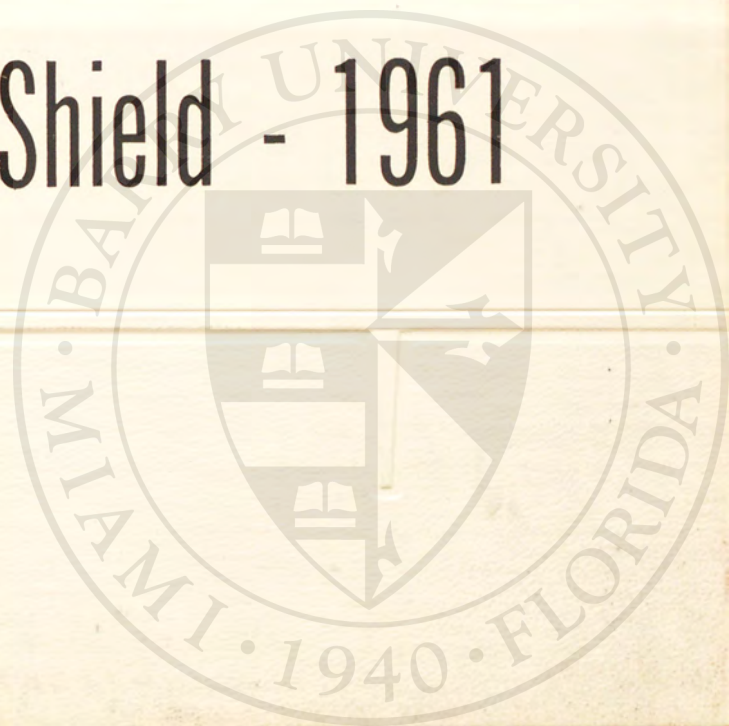


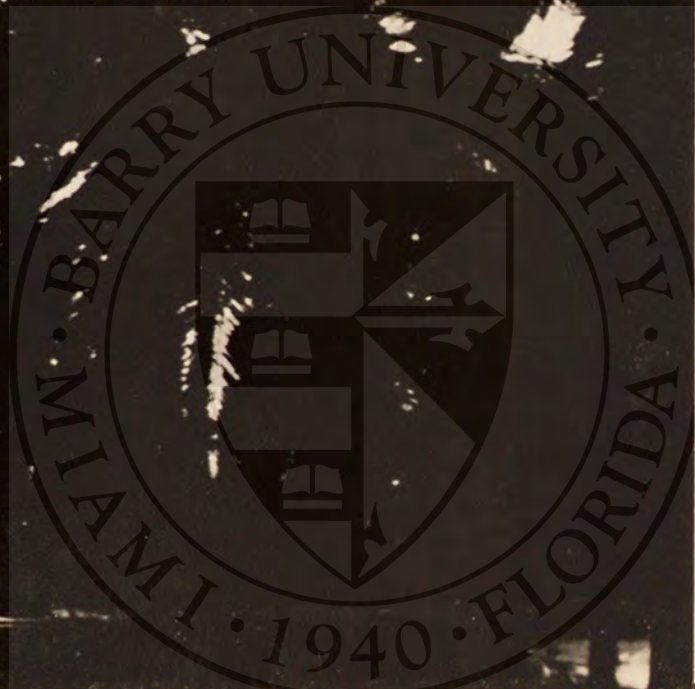
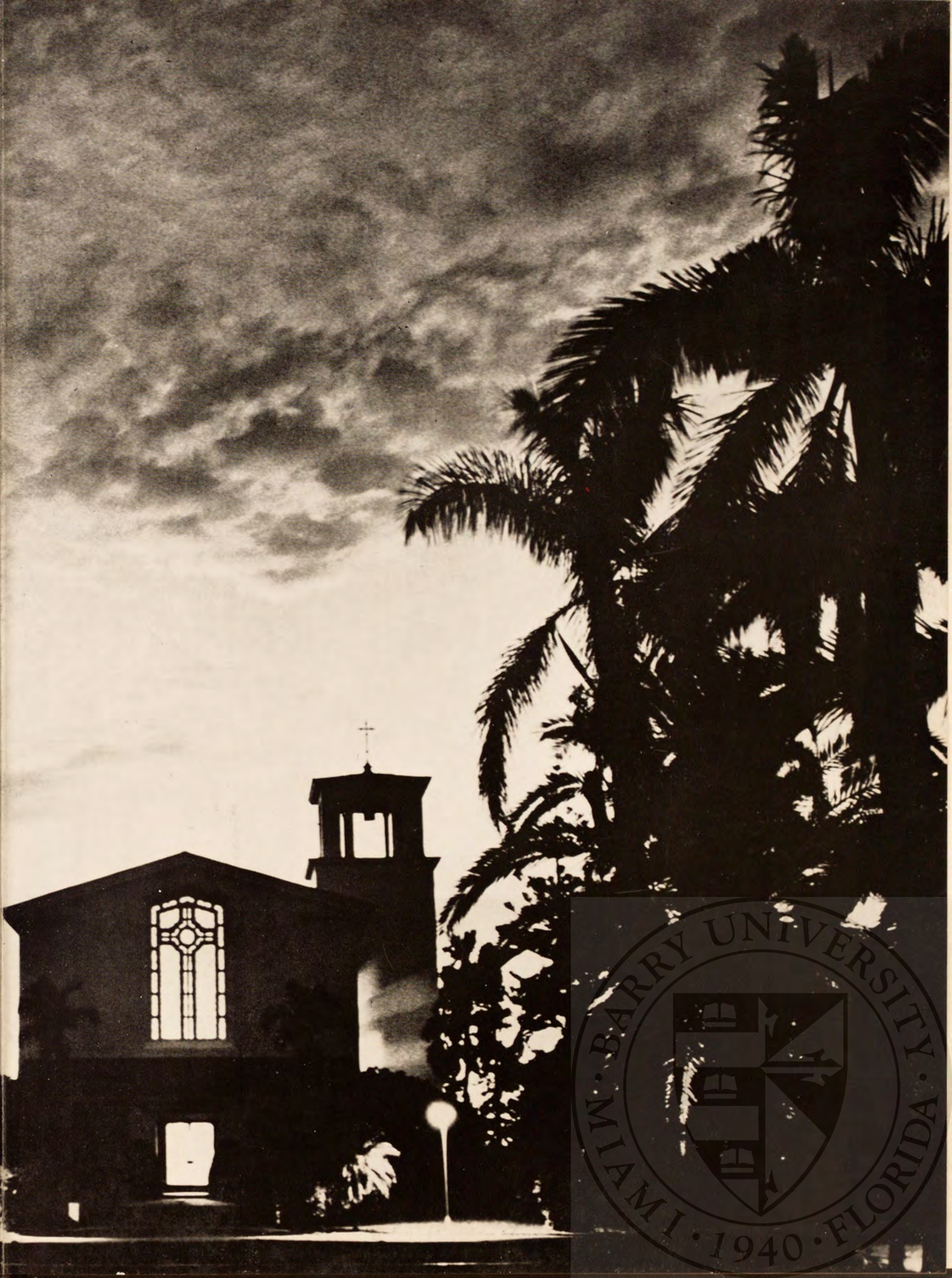
BARRY COLLEGE • MIAMI SHORES • FLORIDA



Torch and Shield - 1961







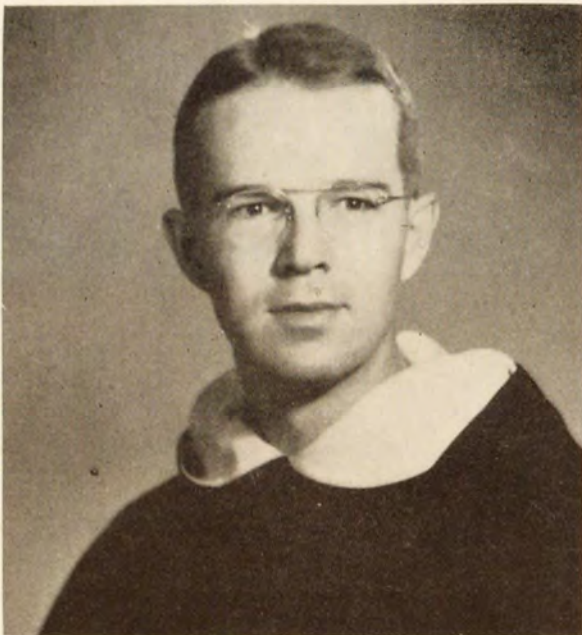
TORCH AND SHIELD

Yearbook
of
Barry College
Miami, Florida
1961

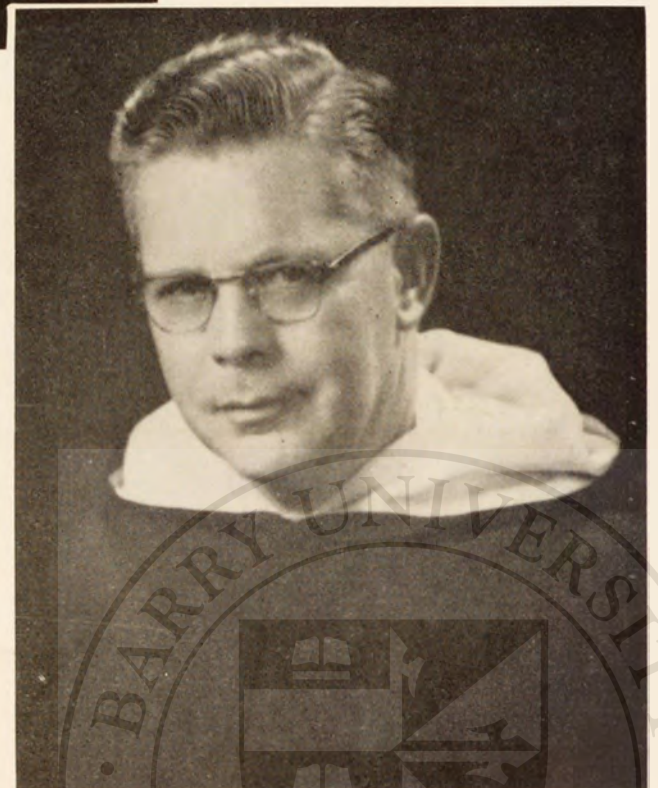




The Right Reverend
Monsignor William Barry, P.A.



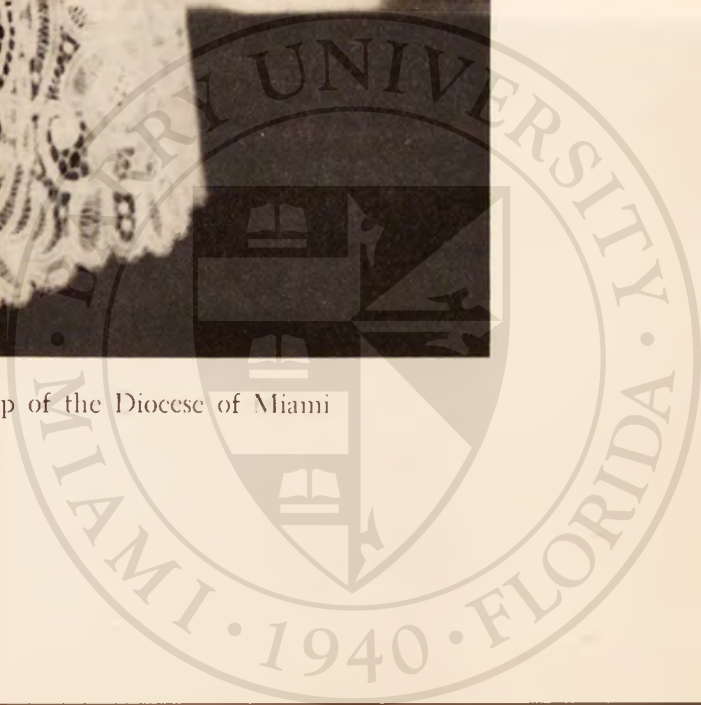
The Reverend
John M. Egan, O.P.



The Reverend
Louis M. O'Leary, O.P., Chaplain



The Most Reverend Coleman F. Carroll, D.D., J.C.D., Bishop of the Diocese of Miami



*To Reverend Mother
Mary Gerald, O. P.*

As Israel with brass antiphony
Did greet the Ark in trumpeted accord,
We hail the psalm its living likeness—thee.

For, like the Ark, thy strength before the Lord
Upholds the cloistered spirit of the Law;
And thy beauty—learning—wields a telling sword.

Thy heart, the well from which thy daughters draw
Increased devotion; thy wisdom, the chiseled slate
That Judah held in love and faith and awe.

Though wisdom, strength, and beauty mark the great
Of soul, yet finer ore was in the mold
That bent thy love to this maternal state.

Within thy spirit burnished to ripened gold
We see the countenance of God unfold.

MERCEDES MOLINA
MARY KATE FROST





In recognition of her contribution to cultural and educational progress, Loyola University of Chicago, on February 1, 1961, conferred upon our President, Mother Mary Gerald, O.P., the degree of Doctor of Laws, *honoris causa*. The faculty and students of Barry College offer sincere congratulations.



FACULTY



But Emily says . . .



It must be a Jesuit joke.



Have you read the campus best seller?



MEETING



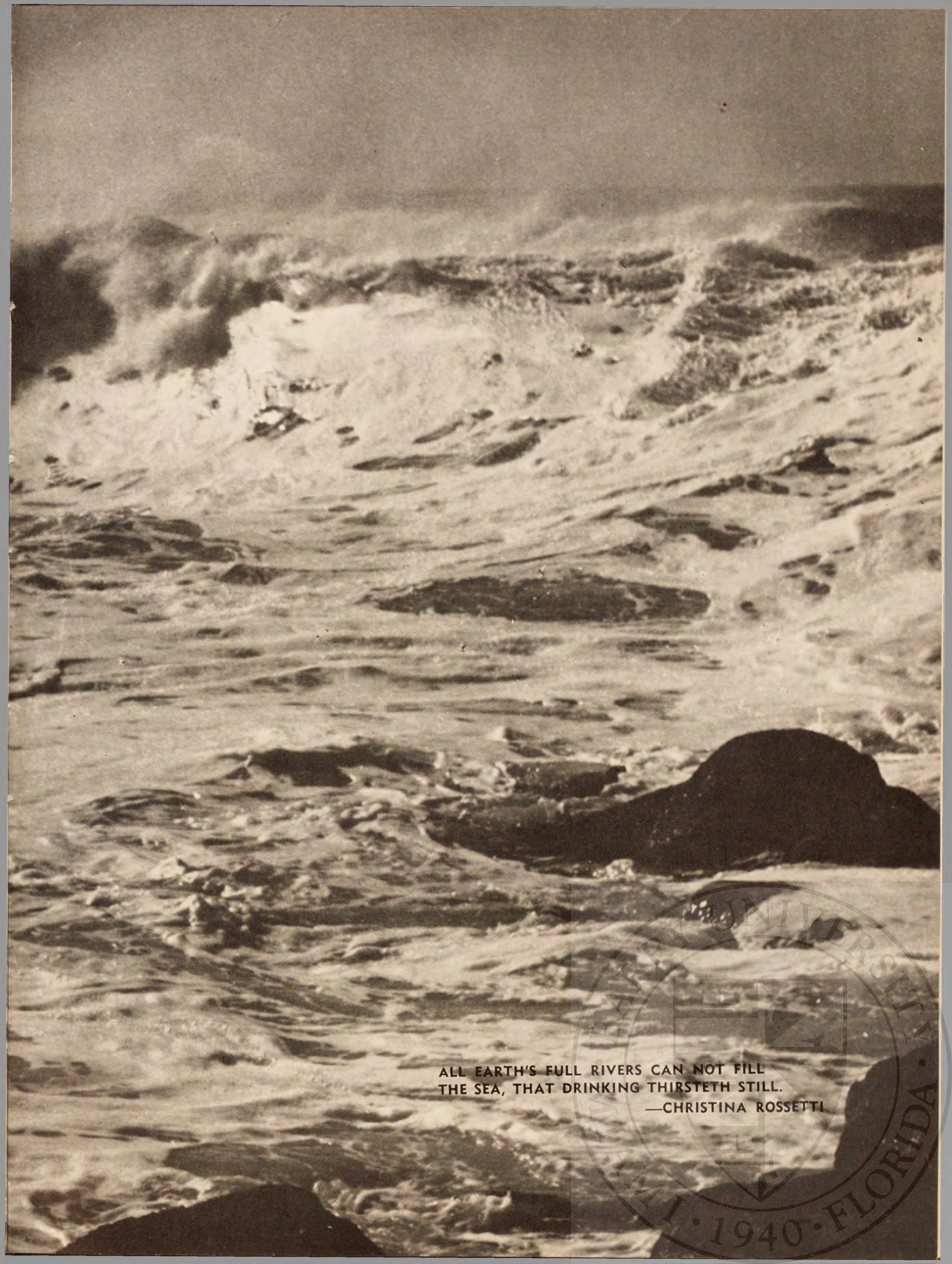
Sister Mary Alice enjoys an anecdote from a convention report.



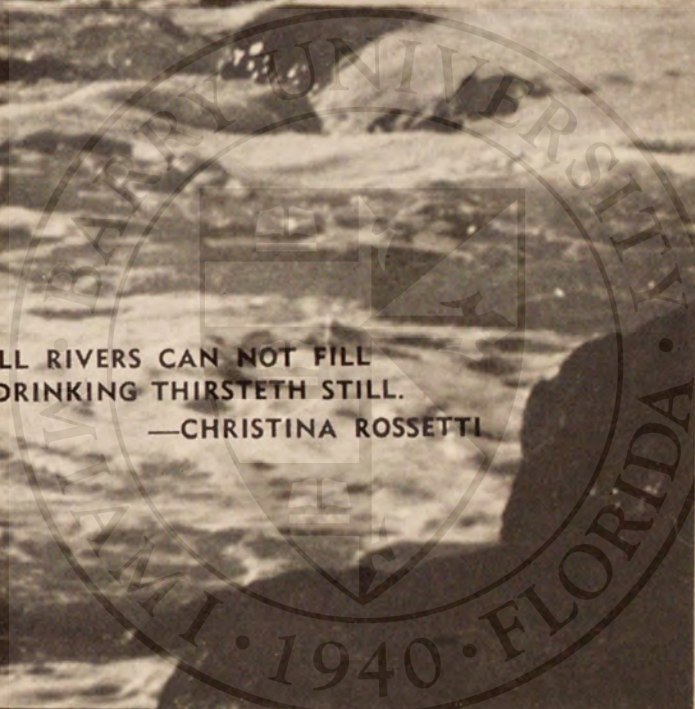
Last minute assignment.







ALL EARTH'S FULL RIVERS CAN NOT FILL
THE SEA, THAT DRINKING THIRSTETH STILL.
—CHRISTINA ROSSETTI





NO RIVER
FILLS THIS MIND
THAT ROLLS
UNMARGINED
UPON ITSELF . . .
AND RIVERS NEVER FILL ITS DEEP,
NOR SPILL
UPON THE CLEFT INFINITE.

—MARY KATE FROST



ALICE M. BRIGHTBILL; Convent Station, New Jersey; A.B. in English; Minors in History, Journalism, Spanish; Playhouse 1; Sodality 1, 2, 3; Cor Jesu Choir 1, 2, 3, 4; Class Secretary, 2 President, 3 Student Council Representative; Student Council 2, 3, 4 Chairman; House Council 1; Counselor 2, 3; *Who's Who in American Colleges and Universities*; Lambda Sigma Honor Society 2, 3, 4; *Miami Herald* Columnist 3; Student Body President 4; *Angelicus* Staff 1, 2, 3.





MERCEDES DEANNA MOLINA;
Miami Shores, Florida; A.B. in History;
Minors in Education, English, Philoso-
phy; Sodality 1, 2, 3 Eucharistic Chair-
man, 4 Prefect; Playhouse 1, 2, 3; Tara
Singers 1, 2, 3, 4; Science Club 1; Class 1
Secretary Pro-tem; Student Council 3, 4
Honorary Chairman; Tertiaries 2, 3 Rep-
resentative to Student Council; Literary
Club 2, 3; Delta Sigma Omega 1, 2, 3, 4.





SANDRA WRIGHT HOVEY; San Antonio, Texas; A.B. in Speech and Drama; Minors in English, Philosophy, Spanish; Athletic Association 1, 2, 3 Social Chairman; Playhouse 1, 2 Secretary, 3 Treasurer, 4; Sodality 1, 2, 3, 4; Tara Singers 1; Cor Jesu Choir 1, 2, 3, 4; Class 1 Social Chairman; Student Council 4; Social Board 1, 3, 4 Chairman; Campus Queen 4; *Who's Who in American Colleges and Universities*.

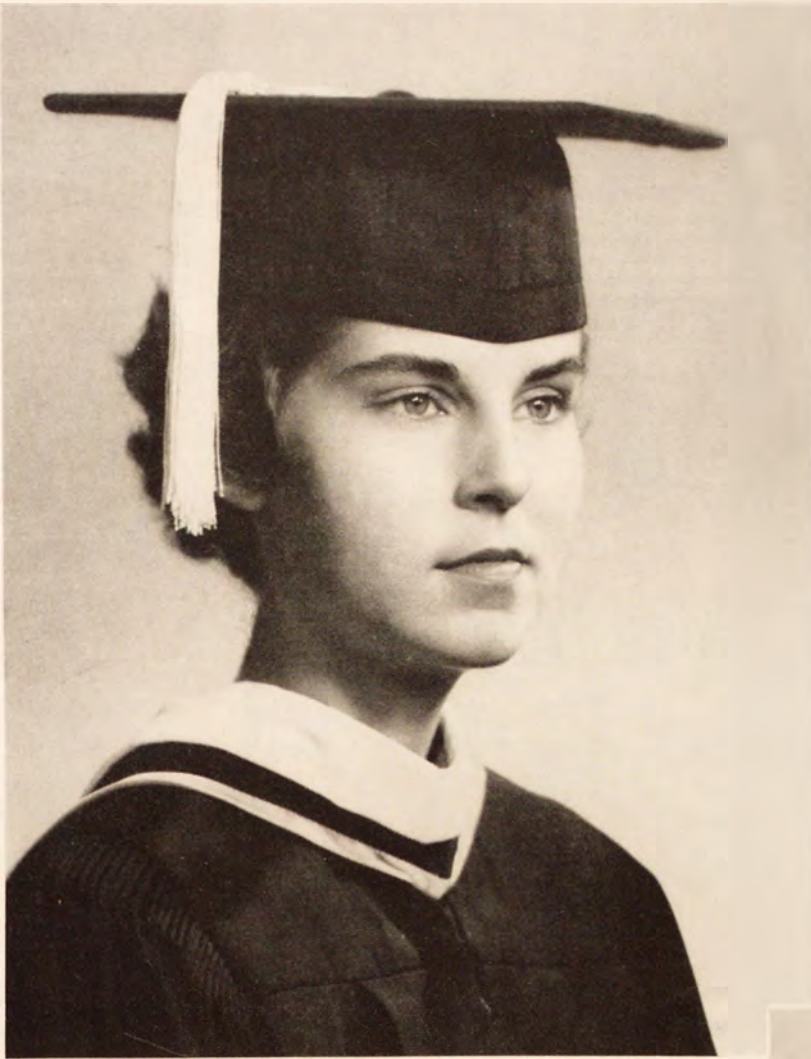


MARY MARGARET REICH; Trussville, Alabama; B.S. in Elementary Education; Minors in English, Philosophy, Spanish; Athletic Association 1, 2 Treasurer; Sodality 2, 3, 4; Tara Singers 1, 2; Cor Jesu Choir 2, 3, 4; Class 2, 3 Vice-President, 4 President; Student Council 2, 3, 4 Executive Board; CCD 2; Lambda Sigma Honor Society 3, 4; Counselor 2, 4.



MARY ELLEN MATAVOSKY; Chicago, Illinois; A.B. in Sociology; Minors in English, French, Philosophy; Athletic Association 1; Playhouse 1; Sodality 1, 2, 3 Eucharistic Committee Chairman and Sodality Council, 4; Tara Singers 1, 4; Cor Jesu Choir 2, 3, 4; Class 3 Treasurer, 4 Vice-President; Student Council 4; Desk Duty Chairman; House Council 2 Wing Chairman; Sociology Club 2, 3, 4; Counselor 2, 4; Lambda Sigma Honor Society 4; *Torch and Shield* Staff 4.





BARBARA MARY McCABE; Brooklyn, New York; B.S. in Home Economics; Minors in Education, English; Home Economics Club 1, 2, 3 Secretary, 4 President; State Treasurer of Florida Home Economics Clubs 4; Class Secretary 4; Library Staff 1, 2, 3; Delta Sigma Omega 2, 3, 4.





CAROLYN DIETER; North Miami, Florida; B.S. in Nursing; Minors in Biology, Social Studies; Tertiaries 3, 4; Nursing Association 1, 2, 3, 4; CCD 2; Orchestra 1, 2, 3; *Angelicus* Staff 2; *Torch and Shield* Staff 4; Counselor 4; Delta Sigma Omega 1, 2, 3, 4; Class Treasurer 4.



LORETTA ANNE MATUS; Miami, Florida; B.S. in Nursing; Minors in Biology, Social Studies; Sodality 1, 3; Science Club 3; Class 3, 4 Social Chairman; Student Council 4; Social Board 3, 4; Nursing Association 1, 2, 3, 4 President; *Who's Who in American Colleges and Universities*; Delta Sigma Omega 1, 2, 3, 4; Queen's Court 4; Lambda Sigma Honor Society 4; Counselor 4.

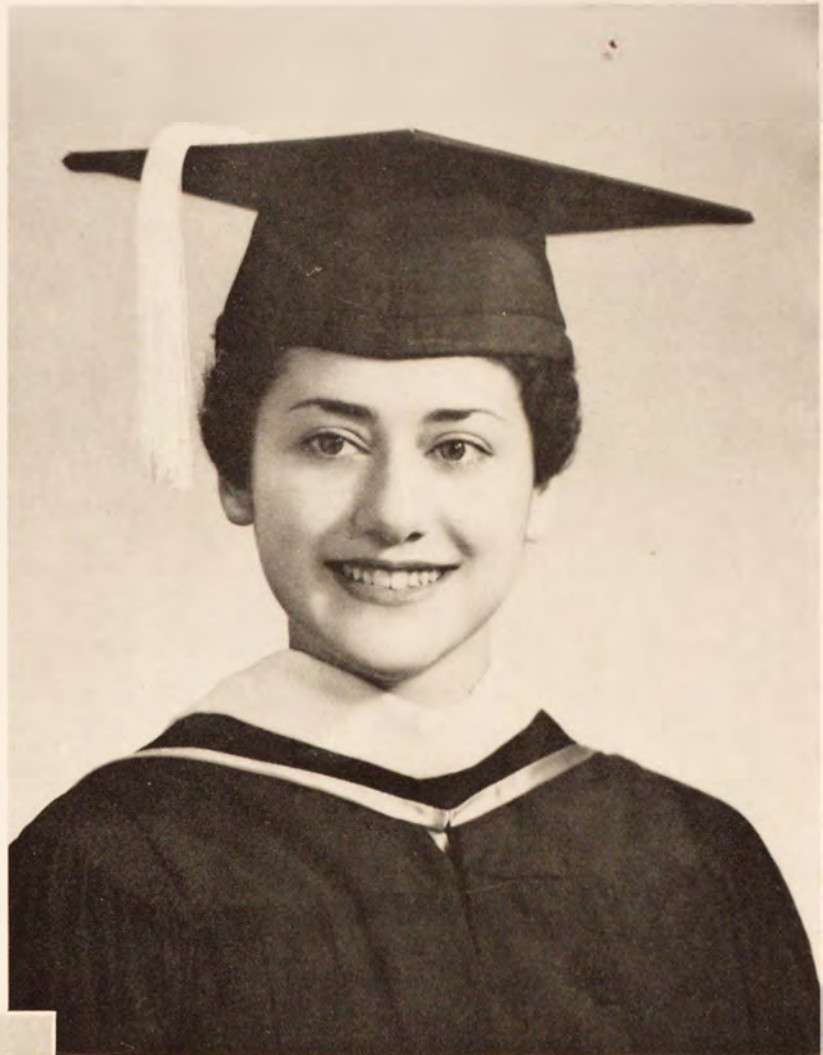




CARMEN JOSEFINA ACEVEDO; Rio Piedras, Puerto Rico; B.S. in Home Economics; Minors in Education, English, Philosophy; Home Economics Club 1, 2, 3, 4; Science Club 1; Spanish Club 1, 2; Foreign Students Club 1, 2.



DOLORES ACKOUREY; Miami, Florida; B.S. in Elementary Education; Minors in English, History, Philosophy, Psychology; transferred from Marywood College, Scranton, Pennsylvania; *Bayleaf* 1, 2 Feature Editor, 3; *Marywoodian* 1, 2 Managing Editor, 3; International Conference of Government 1, 2, 3; Little Flower Society 1, 2, 3; Players 1, 2, 3, 4; League of Sacred Heart 1 Promoter, 2, 3; Future Teachers of America 2, 3; Sodality 1, 2 Vice-President, 3; Student Council 2; Sophomore Class President 2; Athletic Association 4; Delta Sigma Omega 4.





AGNES BROWN ADAMSON; North Miami Beach, Florida; B.S. in Physical Education; Minors in Art, Biology, Education; Athletic Association 1, 2, 3, 4; Science Club 1; Orchestra 2, 3, 4; Counselor 2, 3, 4; Chairman Day Student Counseling Program 3, 4; Mission Council 1, 2; Delta Sigma Omega 1, 2, 3, 4 Secretary-Treasurer; *Torch and Shield* Staff 4.



SUSAN THERESE BALLOU; Hollywood, Florida; B.S. in Elementary Education; Minors in English, Spanish, Speech; Athletic Association 1; Playhouse 1, 2, 3; Cor Jesu Choir 1; Science Club 1, 2; CCD 2; Delta Sigma Omega 2, 3, 4.





JESSIE MAE BRANCO; Lakeland, Florida; B.S. in Nursing; Minors in Biology, Social Studies; Sodality 2, 3, 4; Cor Jesu Choir 2, 3, 4; House Council 4; Nursing Association 1, 2, 3, 4; Sacristan 1, 2, 3, 4; Counselor 2, 3, 4.



ANGELA BRANDL; Chicago, Illinois; A.B. in English; Minors in History, Journalism; Athletic Association 1; Sodality 1, 2, 3, 4; Student Council 3, 4; *Torch and Shield* Staff 4; Counselor 3, 4 Co-ordinating Chairman; *Angelicus* 2 Circulation Manager, 3, 4 Editor.





MARY JANE BRODERICK; Bayside, New York; B.S. in Nursing; Minors in Biology, Social Studies; Sodality 2; Cor Jesu Choir 3; Beta Kappa Kappa 1; Nursing Association 1, 2, 3, 4.



MRS. GERALDINE WENDY BURK-
ARD; Miami, Florida; B.S. in Elementary
Education; Minors in English, Philoso-
phy, Spanish; transferred from Wheelock
College, Boston, Massachusetts; Delta
Sigma Omega 3, 4.





ZAIDA CACHO; Santurce, Puerto Rico; A.B. in Speech and Drama; Minors in English, French, History; Playhouse 1, 2, 3, 4 Costume Mistress; Cor Jesu Choir 1; Science Club 1; CCD 2, 4 Secretary; Queen's Court 4; Beta Kappa Kappa 4; Sociology Club 1, 2, 4.



MARIE ARLENE CAPUANO; Passaic, New Jersey; B.S. in Elementary Education; Minors in English, Philosophy, Spanish; Tara Singers 1, 2; Spanish Club 1, 2, 3, 4; Beta Kappa Kappa 3, 4.

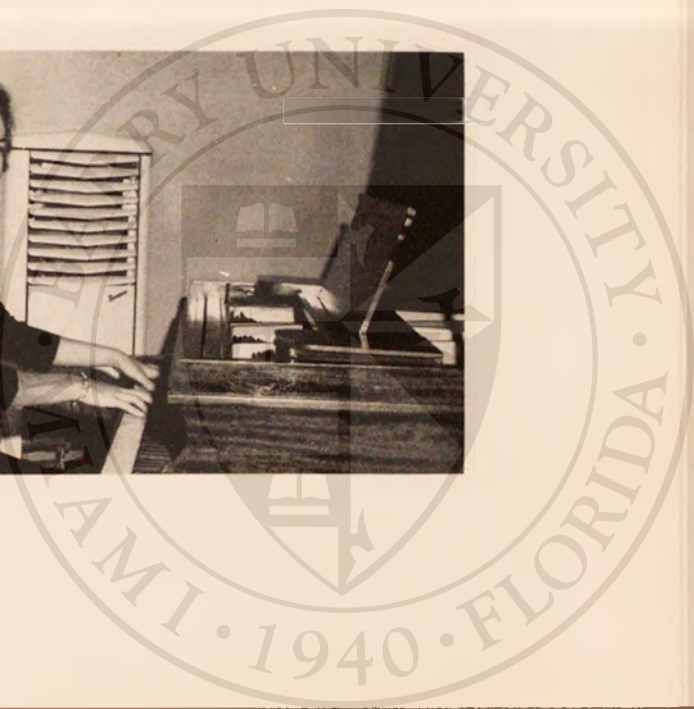




KATHLEEN A. CASHMAN; Queens Village, New York; B.S. in Elementary Education; Minors in English, Mathematics, Philosophy; Athletic Association 1; CCD 3, 4; Sociology Club 3; *Torch and Shield* Staff 4; Delta Sigma Omega 1, 2, 3, 4; *Angelicus* 3, 4.



CAROL M. J. CEGELSKI; St. James, Long Island, New York; B.S. in Nursing; Minors in Biology, Social Studies; Athletic Association 4; Sodality 1, 2, 3, 4 Secretary of Catholic Truth Committee; House Council 3; Social Board 4; Nursing Association 1, 2, 3, 4 Vice-President and Social Chairman; Orchestra 1, 2.





CHRISTINE MARIE CHOMYN;
Miami Shores, Florida; A.B. in Sociology;
Minors in Education, English, Philoso-
phy; Athletic Association 1; Science Club
1; Sociology Club 1, 2, 3, 4; Mission
Council 1, 2; Delta Sigma Omega 1, 2,
3, 4.



MARY ANN CLANCEY; Venice, Florida; B.S. in Nursing; Minors in Biology, Social Studies; Sodality 1, 2, 3, 4; Student Council 1; Nursing Association 1, 2, 3, 4 Corresponding Secretary; Orchestra 1, 2; Counselor 2.





ELIZABETH ANN CLEMENGER;
Hollywood, Florida; B.S. in Biology;
Minors in Chemistry, Philosophy; Sci-
ence Club 2, 3 Corresponding Secretary,
4; Delta Sigma Omega 2, 3, 4.

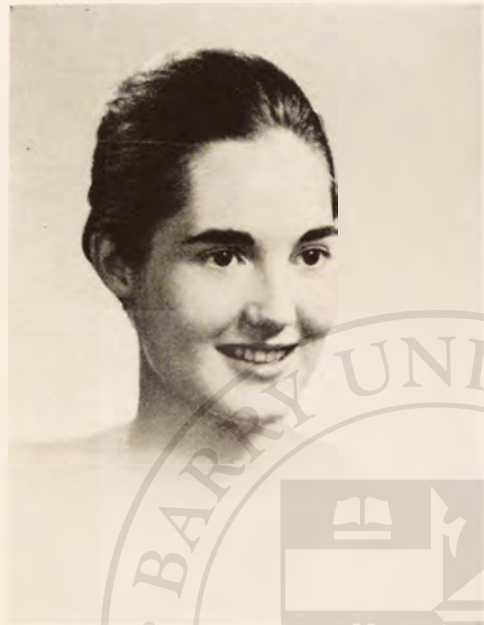


MARY ANN COOMES; St. Augustine, Florida; B.S. in Elementary Education; Minors in English, Philosophy, Spanish; Playhouse 1; Sodality 2 Secretary, 1, 3, 4 Vice-Prefect; Tara Singers 1; Cor Jesu Choir 1, 2, 3, 4; Science Club 1; Class 3 Secretary; Student Council 4 Secretary; Lambda Sigma Honor Society 1, 2, 3, 4; *Who's Who in American Colleges and Universities*; Counselor 2, 3, 4; Chairman 4.

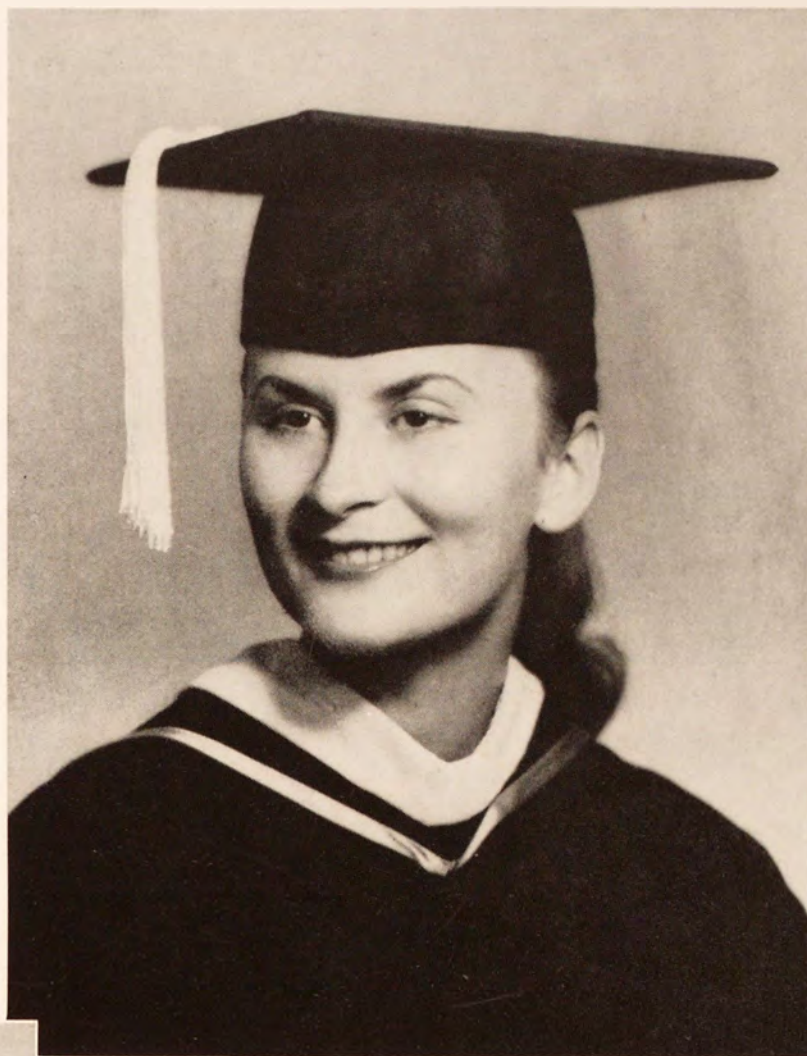




BARBARA MAY CRANE; Duncedin, Florida; B.S. in Elementary Education; Minors in English, Philosophy, Biology; transferred from St. Mary-of-the-Woods College, Terre Haute, Indiana; Student Council Representative 4.



ELIZABETH MARCIA CRAWFORD;
Miami, Florida; B.S. in Home Eco-
nomics; Minors in Education, English,
Spanish; Playhouse 1; Home Economics
Club 1, 2, 3, 4 Vice-President; Delta
Sigma Omega 2, 3, 4.





EMILY CREQUE; Miami, Florida; B.S. in Elementary Education; Minors in English, Philosophy, Spanish; Tara Singers 1; Spanish Club 1; Delta Sigma Omega 1, 2, 3, 4.



CAROL ANN DeMARCO; Queens, New York; A.B. in Music Education; Minors in Education, English, History; Playhouse 2, 3, 4; Sodality 3, 4; Tara Singers 1, 2, 3, 4; Cor Jesu Choir 1, 2, 3, 4; Student Council Representative 3; Beta Kappa Kappa 3, 4 President; CCD 1, 2, 3, 4; Lambda Sigma Honor Society 2, 3, 4.

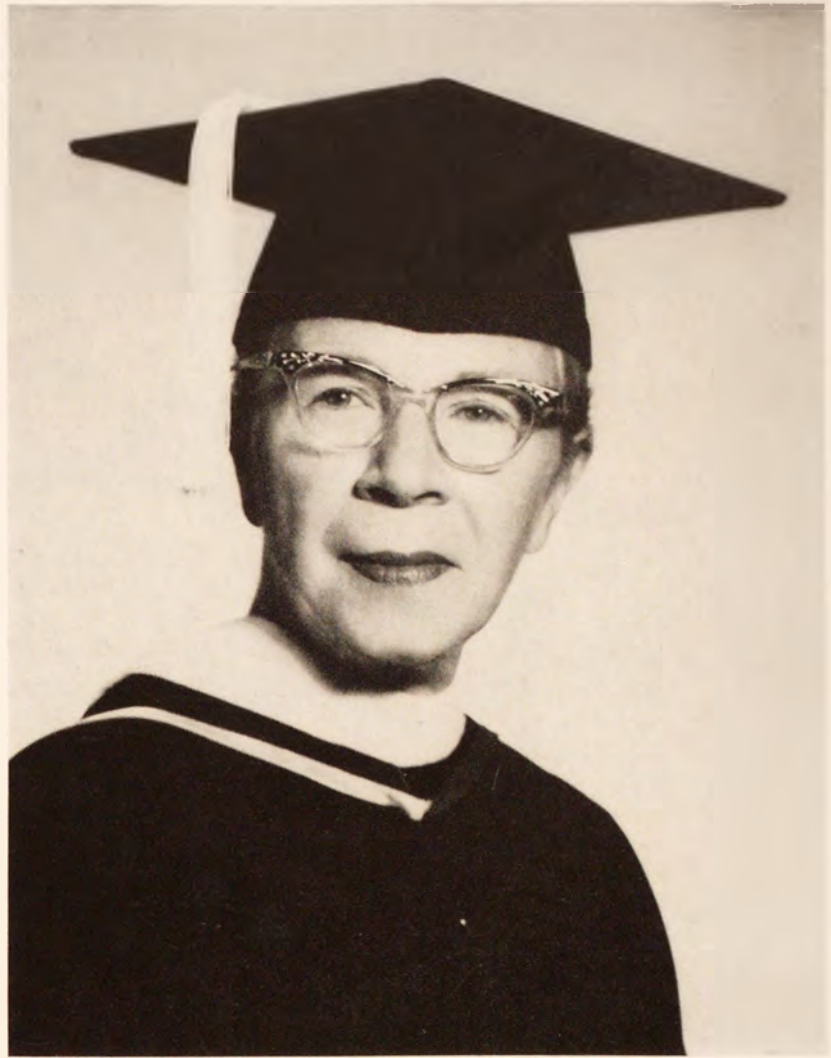




MARY ANN ENGLISH; Miami, Florida; B.S. in Nursing; Minors in Biology, Social Studies; Tertiaries 3, 4; Nursing Association 1, 2, 3, 4; CCD 2; Orchestra 1, 2, 3; *Angelicus* Staff 2; *Torch and Shield* Staff 4; Counselor 4; Delta Sigma Omega 1, 2, 3, 4.



MRS. ROSA E. ENNIS; Fort Lauderdale, Florida; A.B. in Spanish; Minors in Latin, Education; Beta Kappa Kappa 3, 4.





MRS. MARGUERITE C. FERNANDEZ; Paris, France; A.B. in Spanish; Minors in Education, French; Beta Kappa Kappa †; Mission Council †; Delta Sigma Omega †.



MRS. ADELAIDE E. FREY; Pitts-
burgh, Pennsylvania; A.B. in Spanish;
Minors in Education, English, History;
Spanish Club 3; Beta Kappa Kappa 4;
Mission Council 4; Delta Sigma Omega
3, 4.



JANE F. GALLAGHER; Fort Lauderdale, Florida; B.S. in Chemistry; Minors in Biology, Mathematics; Athletic Association 1; Sodality 2; Science Club 1, 2 Corresponding Secretary, 3, 4; Class 1, 2 Treasurer, 3 President; *Torch and Shield* Staff 4; Delta Sigma Omega 2, 3, 4 President; Mission Council 4; *Angelicus* 1, 3 Advertising Manager; Counselor 3, 4; *Who's Who in American Colleges and Universities*.





ANA MARGARITA GARCIA; Santurce, Puerto Rico; A.C. in French; Minors in English, Latin, Secretarial Science; transferred from University of Puerto Rico, Rio Piedras, Puerto Rico; Athletic Association 4; Spanish Club 2, 4; Beta Kappa Kappa 3, 4; Foreign Students Club 2, 3; *Torch and Shield* Staff 4.





DONNA LEE GRAHAM; Key West, Florida; A.B. in Sociology; Minors in English, Philosophy; Playhouse 1, 2, 3, 4; Tara Singers 4; Class 1, 2 Student Council Representative; Sociology Club 1, 2, 3 President, 4; Counselor 2, 4; *Torch and Shield* Staff 4.



CAROL GRIFFIN; Hallandale, Florida;
B.S. in Nursing; Minors in Biology, Social
Studies; Nursing Association 1, 2, 3, 4;
Delta Sigma Omega 1, 2, 3, 4.





CAROL ANN GURNIK; Irvington, New Jersey; A.B. in Latin; Minors in Education, English, History, Philosophy; Athletic Association 1; Sodality 2, 3; House Council 3 Wing Chairman; Spanish Club 3, 4; Beta Kappa Kappa 3, 4.

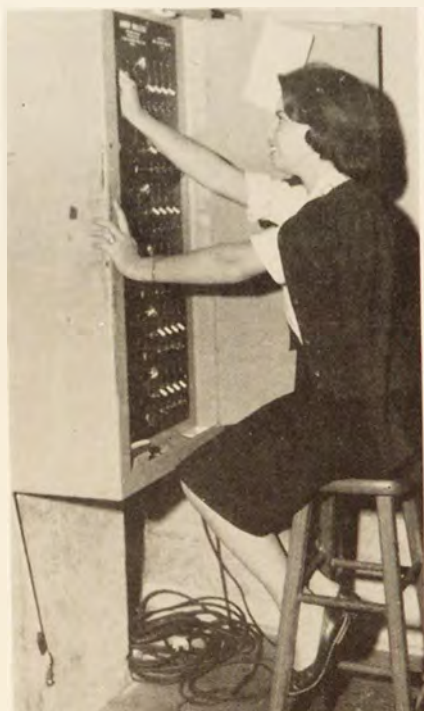


MRS. LOUISE SHONTER HAIR:
Miami, Florida; B.S. in Elementary Edu-
cation; Minors in English, Spanish,
Speech; transferred from Florida State
University, Tallahassee, Florida; Play-
house 3, 4; Sodality 4; Beta Kappa Kappa
4; CCD 3, 4; Delta Sigma Omega 3, 4.





KATHLEEN FRANCES HASTINGS; Osbornville, Bricktown, New Jersey; A.B. in Speech and Drama; Minors in Education, English; Athletic Association 1, 2; Playhouse 1, 2, 3, 4 President; Tara Singers 1, 2, 3; House Council 2 Representative; Counselor 4.



SANDRA HERETER; San Juan, Puerto Rico; A.B. in English; Minors in French, Philosophy; transferred from Catholic University of Puerto Rico, Ponce, Puerto Rico; Tara Singers 1,2; Spanish Club 1,2; CCD 1.



JOYCE MARIE HORACEK; Hollywood, Florida; A.B. in French; Minors in Education, English, History, Latin; Athletic Association 1, 2, 3 President, 4 Treasurer; Student Council 3; Tertiaries 2, 3, 4; Beta Kappa Kappa 3, 4; Counselor 3, 4; Delta Sigma Omega 2, 3, 4.





MARY LOU HOWARD; Warren, Ohio; A.B. in Art; Minors in English, History, Philosophy; Delta Sigma Omega 1, 2, 3, 4.



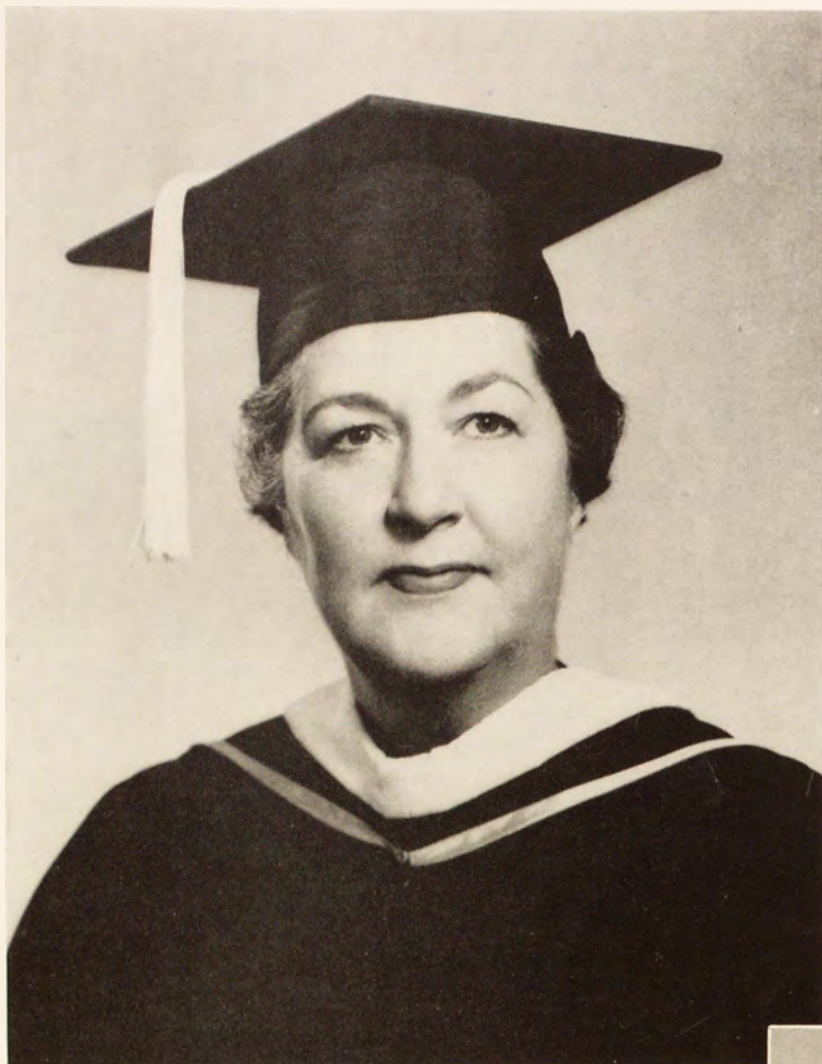


MARJORIE ANN HUTH; Fort Lauderdale, Florida; A.B. in Speech and Drama; Minors in Education, English; transferred from Ohio University, Athens, Ohio; Playhouse 3, 4; Delta Sigma Omega 3, 4.



DIGNA MARINA IRIZARRY; San German, Puerto Rico; B.S. in Dietetics; Minors in Biology, Chemistry, English; transferred from Catholic University of Puerto Rico, Ponce, Puerto Rico; Athletic Association 4; Sodality 2; Home Economics Club 3, 4 Treasurer; Science Club 2; Spanish Club 2, 4; Foreign Students Club 2; *Torch and Shield* Staff 4.





MRS. ESTHER N. KILDEA; Detroit, Michigan; A.B. in English; Minors in Education, Speech; Playhouse 1, 2, 3; Literary Club 2, 3; Delta Sigma Omega 1, 2, 3, 4.



SHARON ANN KILLEEN; Rumson,
New Jersey; A.B. in French; Minors in
English, History; Junior Year at Reid
Hall, Paris, France.





MRS. MARIE KUIKEN; North Miami, Florida; B.S. in Elementary Education; Minors in English, French, Library Science; transferred from University of Miami, Miami, Florida; Delta Sigma Omega 3, 4.



LOUISE YVONNE LaJEUNESSE;
Canton, Ohio; B.S. in Dietetics; Minors
in Biology, Chemistry, English; Athletic
Association 1, 2, 3, 4; Sodality 1, 2, 3, 4;
Home Economics Club 1, 2, 3; Tara
Singers 2, 4; Cor Jesu Choir 1, 2, 3, 4;
Sacristan 1, 2, 3, 4; *Torch and Shield*
Staff 4.





MARJORIE ANN LEWIS; Miami, Florida; B.S. in Elementary Education; Minors in English, Philosophy, Speech; Playhouse 2; Science Club 2; Orchestra 1, 2, 3, 4; Delta Sigma Omega 1, 2, 3, 4.



ELENA LUGO; Mayaguez, Puerto Rico;
A.B. in Sociology Minors in Education,
English, History, Philosophy; transferred
from Seton Hill College, Greensburg,
Pennsylvania; Tertiaries 3, 4; CCD 4;
Sociology Club 4; Foreign Students Club
3, 4.





NANCY MATAVOSKY; Chicago, Illinois; A.B. in Sociology; Minors in English, French, Philosophy; Athletic Association 1; Playhouse 1; Sodality, 1, 2, 3; Secretary and Sodality Council 4; Tara Singers 1; Cor Jesu Choir 2, 3, 4; Student Council 4, Dining Room Committee House Council 3, Wing Representative, 4 President; Sociology Club 2, 3, 4; Counselor 2, 4; *Torch and Shield* Staff 4.



MRS. MARY LOUISE MAYTAG Mc-
CAHILL; Miami Beach, Florida; A.B.
in English; Minors in History, Philos-
ophy; transferred from Duquesne Uni-
versity, Pittsburgh, Pennsylvania; Delta
Sigma Omega 3, 4.





ROSE-MARIE MONTERO; Miami, Florida; B.S. in Nursing; Minors in Biology, Social Studies; Sodality 1, 2, 3; Tertiaries 2, 3, 4 Secretary; Nursing Association 1, 2, 3 Recording Secretary, 4; Delta Sigma Omega 1, 2, 3, 4; Lambda Sigma Honor Society 3, 4.



ELAINE FRANCES MURPHY; Miami Shores, Florida; A.B. in English; Minors in Education, Secretarial Science, Spanish; Delta Sigma Omega 1, 2, 3, 4.





MARY ANNE NEWELL; St. Petersburg, Florida; B.S. in Nursing; Minors in Biology, Social Studies; Athletic Association 4; Nursing Association 1, 2, 3, 4; Orchestra 2.



JUDITH PACE; Clinton, Massachusetts; A.B. in Sociology; Minors in Biology, English, Philosophy, Spanish; Athletic Association 4; Science Club 1, 2; House Council 3, 4; Spanish Club 1, 2, 4; CCD 2, 3, 4 President; Sociology Club 3, 4 President; *Torch and Shield* Staff 4; Counselor 4.





MARGARITA RAIDI; Valencia, Venezuela; A.B. in Sociology; Minors in English, French; Athletic Association 1, 2, 3; Playhouse 1, 2, 3, 4; Sodality 1, 2, 3, 4; Spanish Club 1, 2, 3; Sociology Club 3, 4; Counselor 2, 4; Foreign Students 1, 2, 3; *Torch and Shield* Staff 3, 4 Co-Editor.



ROSEEN ANNE RINDONE; Wareham, Massachusetts; A.B. in Sociology; Minors in English, Philosophy; Playhouse 1, 2, 3, 4; Tara Singers 1, 2, 3; Social Board 4 Queen's Court; Sociology Club 1, 2, 3 Secretary-Treasurer, 4; *Torch and Shield* 3, 4 Co-Editor; Counselor 4.





MRS. LILLIAN ROMERO; Miami, Florida; A.B. in Spanish; Minors in Education, History, Latin; Beta Kappa Kappa 2, 3 Vice-President, 4; Mission Council 1, 2, 3 Secretary, 4 President; Delta Sigma Omega 1, 2, 3, 4.



MARTHA MARY SACONCHIK;
Miami, Florida; B.S. in Physical Educa-
tion; Minors in Biology, Education, Eng-
lish; Athletic Association 1, 2, 3, 4 Pres-
ident; Playhouse 2, 3; Sodality 1, 2, 3, 4;
Science Club 1, 2; Class 1, 2; Student
Council 4; Tertiaries 3, 4; Beta Kappa
Kappa 3; Delta Sigma Omega 1, 2, 3, 4.





M. EDWINA SCANLAN; North Miami Beach, Florida; B.S. in Mathematics; Minors in Chemistry, Education; Science Club 1, 2 Vice-President; Class 2 Secretary; Student Council 3, 4; Social Board 4 Queen's Court; Delta Sigma Omega, 1, 2, 3 President, 4.



ROBERTA SCHNEIBLE; United States Naval Base, Guantanamo Bay, Cuba; A.B. in Sociology; Minors in Education, English, Spanish; CCD 1, 2; *Torch and Shield* Staff + Business Manager.





ROSEMARIE SCHNEIBLE; United States Naval Base, Guantanamo Bay, Cuba; B.S. in Nursing; Minors in Biology, Social Studies; Nursing Association 1, 2, 3, 4; CCD 1; Sacristan 1, 2.



EVELYN A. SOLIS; Caguas, Puerto Rico; B.S. in Dietetics; Minors in Biology, Chemistry, Education; Athletic Association 4; Home Economics Club 3, 4; Science Club 1; Spanish Club 1, 2, 4 Treasurer; Foreign Students Club 1, 2.





SUSAN ELEANOR TALBOT; South Miami, Florida; B.S. in Elementary Education; Minors in English, Philosophy, Spanish; Sociology Club 2, 3.



TERRELL JANE WALTER; Oswego,
New York; B.S. in Nursing; Minors in
Biology, Social Studies; transferred from
Russell Sage College, Troy, New York;
Nursing Association 2, 3, 4; *Torch and
Shield* Staff 4; Delta Sigma Omega 2,
3, 4.



LINDA R. WILEY; North Miami Beach, Florida; B.S. in Elementary Education; Minors in English, Philosophy, Speech; Athletic Association 1; Playhouse 1, 2; Science Club 1; Delta Sigma Omega 1, 2, 3, 4.





FRANCES WONG; Savannah, Georgia; B.S. in Elementary Education; Minors in English, Latin, Philosophy; transferred from Armstrong Junior College, Savannah, Georgia; Delta Sigma Omega 3, 4.



MARGARET THERESA WONG;
Akron Ohio; A.B. in Speech and Drama;
Minors in English, Philosophy; transferred
from University of Akron, Akron, Ohio;
Playhouse 2, 3; Science Club 2; Spanish
Club 2; Delta Sigma Omega.





MRS. KATHERINE WOOTEN; North Miami, Florida; B.S. in Elementary Education; Minors in English, Philosophy, Speech; transferred from Union College, Barbourville, Kentucky; Delta Sigma Omega 2, 3.





NANCY E. YOHE; Canton, Ohio; A.B. in Speech and Drama; Minors in English, Philosophy; Playhouse 1, 2, 3, 4; Sodality 4; Tara Singers 3; Sociology Club 1, 2, 3; Delta Sigma Omega 2, 3, 4; Counselor 3.



MRS. GLORIA NORMAN YOUNG;
Moultrie, Georgia; B.S. in Elementary
Education; Minors in English, History,
Spanish; transferred from Norman Junior
College; Delta Sigma Omega 3, 4.





MRS. ELIZABETH B. ZOBLE; Miami, Florida; B.S. in Physical Education; Minors in Philosophy, English, Education, Social Studies; transferred from University of Miami, Miami, Florida; Mission Council 3; Beta Kappa Kappa 3.



MRS. MARILYN ALICE KELLER;
Miami, Florida; B.S. in Elementary Edu-
cation; Minors in Library Science, Latin,
History; Delta Sigma Omega 3.





Marjorie Jackson



Ruth Joyce



Patricia Kostrzewski

Secretarial
Science
1961



Joyce Noll



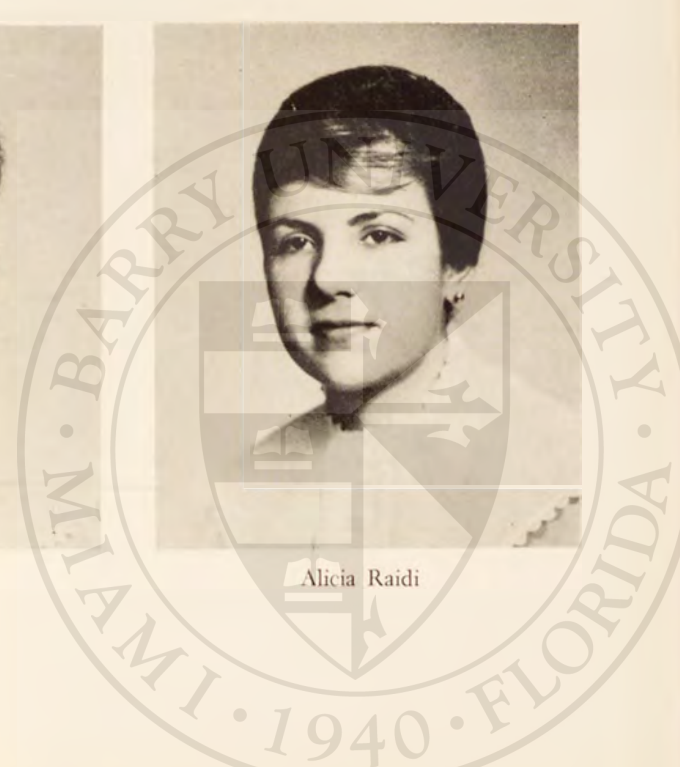
Margaret Previdi



Josephine Prior



Alicia Raidi





Margot Swan



Marie Valenti



Theresa Vazac



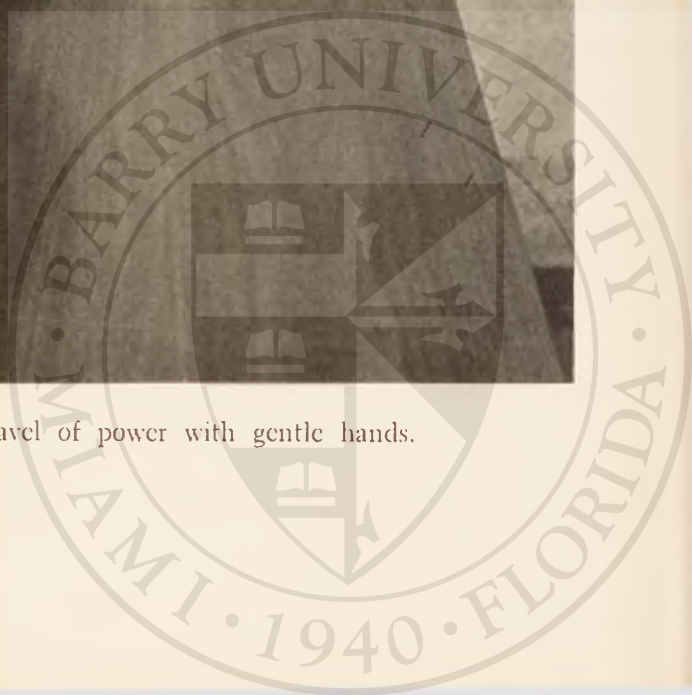
Ellen Donohue, A.B. Sociology



Joan Schmitz, B.S. Nursing



Alice Brightbill, Student Body President, holds the gavel of power with gentle hands.





Barry's future unfolds.



Bevilacqua, Linda
 Harrett, Kathleen
 McCleskey, Natalie
 Scully, Barbara
 O'Connor, Margaret



Abudo, Lillian Elaine
 Balconis, Diane
 Best, Gwendolyn
 Bourke, Patricia
 Brogren, Judith



Collins, Carol Ann
 Comstock, Dale
 Conley, Harriett
 Crangi, Sondra
 Cravaritas, Geraldine



THE JUNI

Crawley, Mary
 DeGise, Ernestine
 Denmat, Suzanne
 Dinnen, Maureen



Ellis, Margaret
 Fletcher, Anita
 Frost, Mary Catherine
 George, Barbara



Gorham, Mary
 Goss, Carol Ann
 Griffiths, Carol
 Hegarty, Karen



Heindel, Alice
 Holcomb, Rebecca
 Horejs, Carol
 Hubers, Anna



Juliano, Julie
 Kemble, Diane
 Kerrigan, Patricia
 Lewis, Hope
 Luttrell, Ruth



Millett, Barbara
 Mueller, Mrs. Mary Ann
 Newman, Martha
 Nyahay, Beverly
 O'Connor, Theresa



O'Hearn, Kathleen
 Otto, Judith
 Patten, Beth-Allen
 Pennock, Patricia
 Polley, Judith



OR CLASS

Purmalis, Mrs. Ruth
 Raiss, Margaret
 Rayburn, Juanita
 Riopel, Rita



Rocchio, Janice
 Scheier, Barbara
 Schwandt, Martha
 Simons, Jane



Siplak, Juliana
 Stodgell, Susan
 Swartz, Gloria
 Troutman, Sharon



Villalba, Rose
 Waddell, Elizabeth
 Walden, Judith



McCleskey, Judith
 Fox, Patricia
 Schneider, Susan
 Hutchinson, Isabelle



Bolton, Nancy
 Brennan, Joyce
 Brown, Patricia
 Burke, Marie Agnes
 Butler, Anita
 Campbell, Alicia



Campbell, Elizabeth
 Campo, Catherine
 Cardet, Lucy
 Carroll, Sandra
 Chao, Betty
 Clemente, Mrs. Dorothy



THE SOPHO

Collins, Cornelia
 Cuttelle, Virginia
 D'Amico, Mrs. Beulah
 Dennison, Kathleen
 Dinnell, Patricia
 Donata, Regina



Doyle, June
 Driscoll, Josephine
 Efthimiou, Mary
 Englebert, Marthanne
 Feak, Mary Jean
 Fleming, Patricia Ann



Flickinger, Mrs. Patricia
 Flood, Elizabeth
 Fredericks, Lorraine
 Gannon, Mary Beth
 Gallagher, Nancy
 Garcia, Martha



Gayzik, Judith
 Giunta, Mary Helen
 Gravely, Barbara
 Griffiths, Eileen
 Hernandez, Lisette
 Kocanda, Carol Ann



Kund, Annette
 Kurtz, Stephanie
 Lawton, Martha
 Leddy, Gail
 Lueg, Irene
 McDonough, Joan Marie



Maloney, Carol Frances
 Maraia, Marie Ann
 Moss, Mrs. Marion
 Nader, Joellen
 Pacholek, Katherine
 Paridon, Barbara



Pedraz, Lucia
 Pennebaker, Mrs. Jean
 Petkus, Jeanne
 Pinto, Diana
 Pla, Margaret
 Planiol, Isabel



MORE CLASS

Poland, Mrs. Elinor
 Raible, Margaret
 Rayno, Lee
 Reece, Judith
 Richardson, Susan
 Rogers, Rae



Rosero, Alba Stella
 Rourke, Helen
 Simms, Peggy
 Singer, Frances
 Southmayd, Sandra
 Stevens, Patricia



Sukys, Mary Jo
 Swayne, Patricia
 Thomas, Mrs. Katherine
 Tivnan, Jean
 Vacarro, Mildred
 Valcourt, Patricia



Weber, Diane
 Wilcox, Dorothy
 Wynne, Nancy
 Busch, Louise
 Granata, Kathy
 Morrissey, Kathy



Burke, Susan
 Rogers, Mary Kay
 Crosby, Mary
 Castro, Elaine
 Roncher, Sonja



Abella, Marisela
 Baker, Susan
 Alexion, Kathryn
 Anderson, Mary
 Arel, Irma
 Audi, Livia



Bachorick, Helen
 Bairstow, Rosina
 Ackermann, Linda
 Bardowell, Cheryl
 Benaglia, Barbara
 Blume, Carol



THE FRESH

Bolduc, Susan
 Boudrias, Mary
 Bowen, Mary Anne
 Brecht, Patricia
 Butler, Lois
 Calac, Francette



Calmano, Patricia
 Cassidy, Maureen
 Catenaci, Joan
 Cavallaro, Julia
 Chase, Mary Ann
 Church, Viann



Ciano, Lorraine
 Coddington, Carol
 Colberg, Madeleine
 Covey, Virginia
 Crippen, Jacqueline
 Croce, Sandra



Damewood, Judith
 DeDuijtsche, Patricia
 DiPasquale, Amette
 Donovan, Mary Ann
 Duffy, Kathleen
 Emiliani, Lourdes



Englehardt, Mary Alice
 Farina, Cynthia
 Farrell, Ellen
 Fenstermaker, Anita
 Figueroa, Lydia
 Fong, Patricia



Fortney, Susan
 Fredericks, Virginia
 Frey, Yvonne
 Gagne, Angelique
 Gendler, Patricia
 Getto, Concetta



MAN CLASS

Goodman, Patricia
 Green, Juanita
 Groover, Judith
 Hacker, Jane
 Hall, Rita
 Hauri, Claudi



Huntsman, Melanie
 Isabelle, Carol
 Jerman, Mary
 Kelley, Sharon
 Keyser, Cheryl
 Khoury, Eleanor



Knapstein, Sharon
 Knott, Mary
 Koppen, Rosemary
 LaBelle, Charlotte
 Lapham, Praxeda
 Lesniak, Diana



Luag, Lana
 Luag, Lena
 Lyster, Andrea
 McGann, Patricia
 McKernan, Mary Lou
 MacDonald, Claire



Magner, Margaret
 Manguso, Rosanne
 Mansour, Joy
 Marginot, Nancy
 Marsh, Marilyn
 Matus, Kathleen



Mayo, Sharon
 Mehrmann, Rita
 Metzger, Monica
 Moran, Michele
 Morin, Marie
 Munoz, Jeannette



Murphy, Mary Ann
 Nightlinger, Mrs. Norma
 Notaro, Phyllis
 O'Connor, Flora
 O'Meara, Elizabeth
 O'Meara, Virginia



Otero, Maria
 Ouhl, Maribarbara
 Peck, Nancy
 Polk, Anne
 Prangle, Sharon
 Raikovitz, Susan



Ramirez, Mrs. Elayne
 Randazzo, Sandra
 Renzo, Nancy
 Renzo, Patricia
 Richards, Martha
 Ringo, Judith



Rionda, Rosa
 Rodriguez, Carlota
 Romeo, Arleen
 Roscello, Ernestine
 Russell, Paula
 Sanders, Charlotte



San Pelayo, Teresita
 Sardo, Teresa
 Savoie, Ursula
 Scheffmeyer, Patricia
 Schlichte, Mary Jo
 Schwartz, Myrna



Scott, Carolyn
 Sguiglia, Patricia
 Sierra, Rosa
 Simonini, Karen
 Spina, Rose Marie
 Steer, Carmen



Stack, Patricia
 Sterck, Clare
 Sudenberg, Alyce
 Tarpey, Jean
 Taylor, Linda
 Teschke, Phyllis



Tighe, Merriellen
 Trussell, Barbara
 Turgeon, Lisette
 Valenti, Marie
 Vega, Olga
 Vidmar, Kathleen



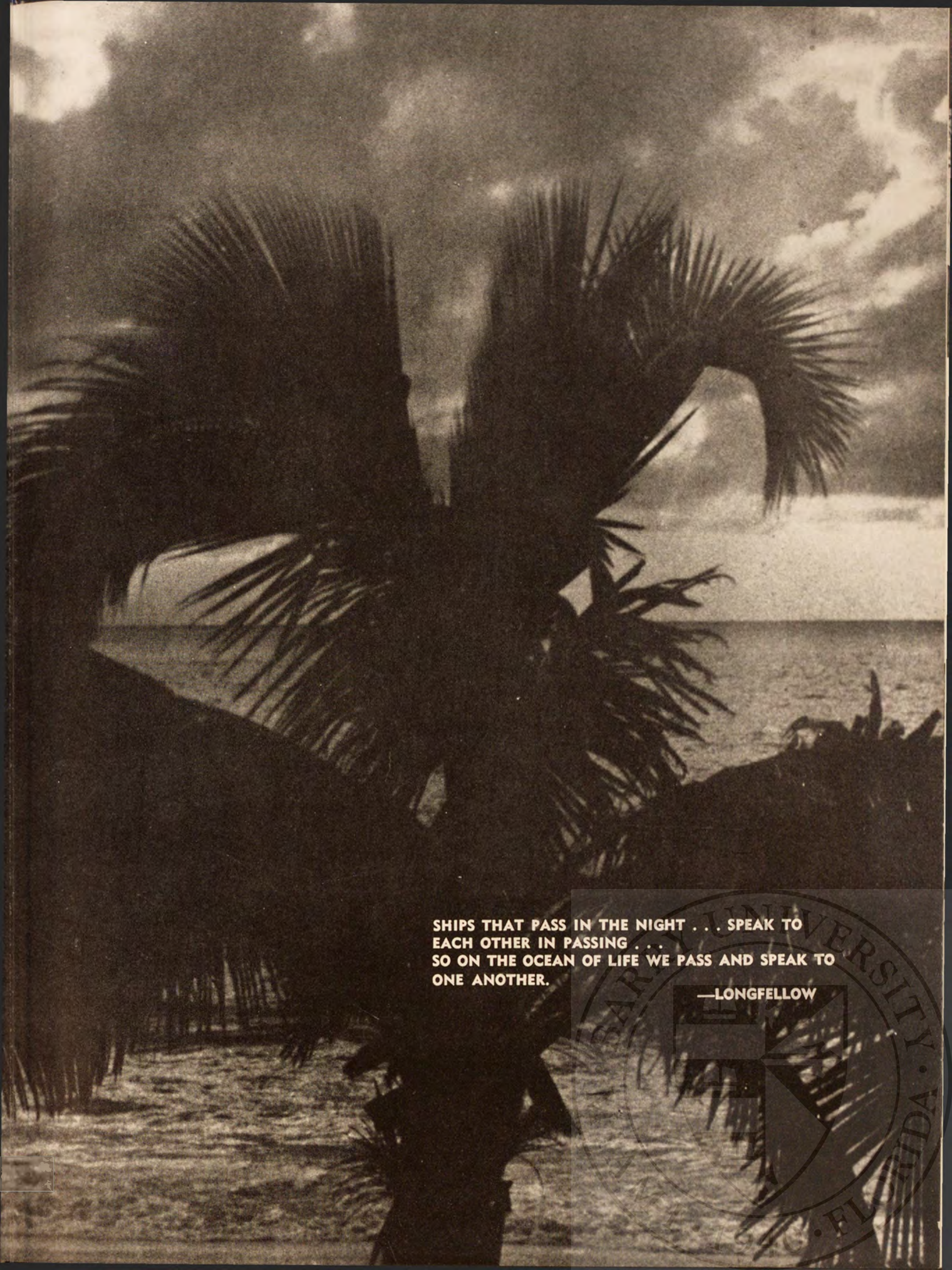
Wahl, Mary Ann
 Wall, Rosalie
 Watson, Mary
 Webber, Margaret
 Weisenbach, Mary
 Wenke, Susan



White, Gloria
 Wolny, Denise
 Zayec, Yvonne

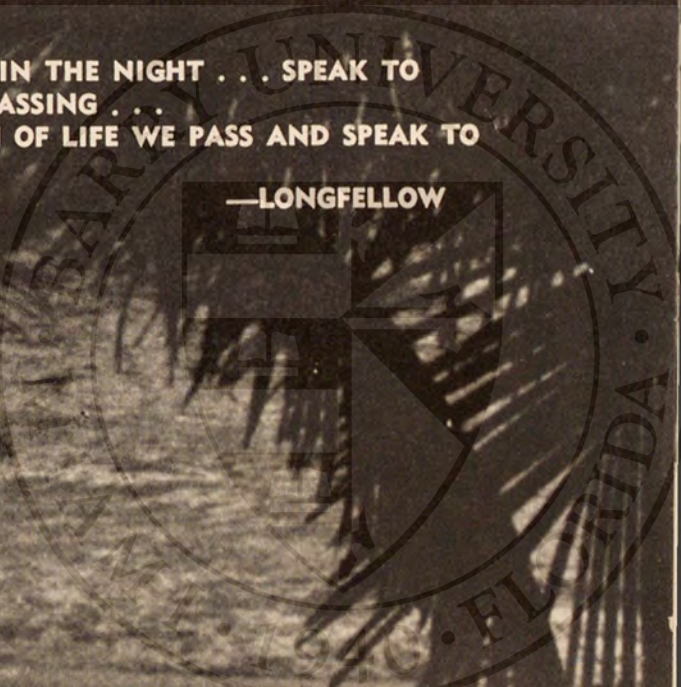






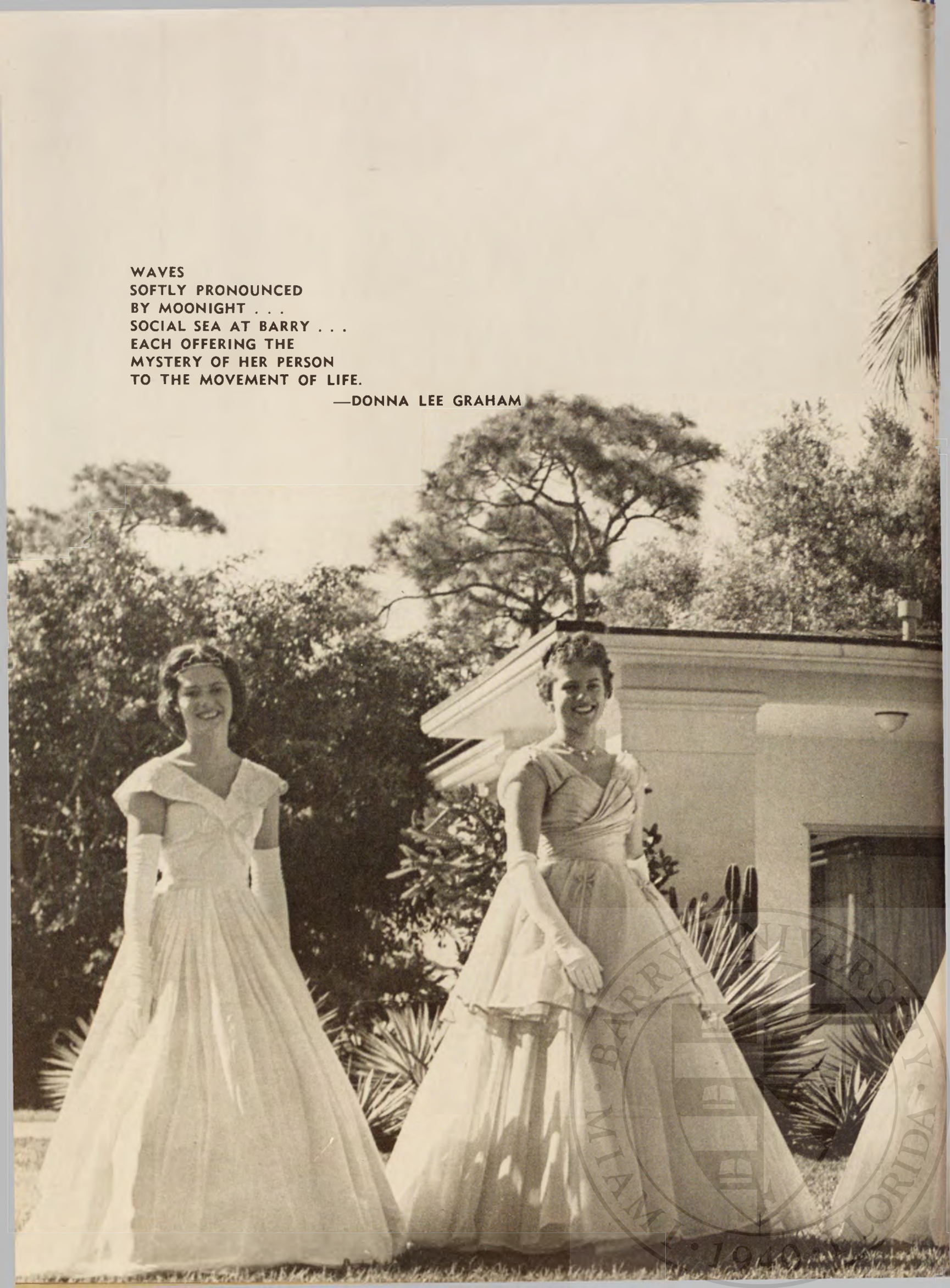
SHIPS THAT PASS IN THE NIGHT . . . SPEAK TO
EACH OTHER IN PASSING . . .
SO ON THE OCEAN OF LIFE WE PASS AND SPEAK TO
ONE ANOTHER.

—LONGFELLOW



WAVES
SOFTLY PRONOUNCED
BY MOONLIGHT . . .
SOCIAL SEA AT BARRY . . .
EACH OFFERING THE
MYSTERY OF HER PERSON
TO THE MOVEMENT OF LIFE.

—DONNA LEE GRAHAM





MIAMI BARRY UNIVERSITY
FLORIDA
1940



Campus Queen, Sandra Hovey, surveys her royal domain.

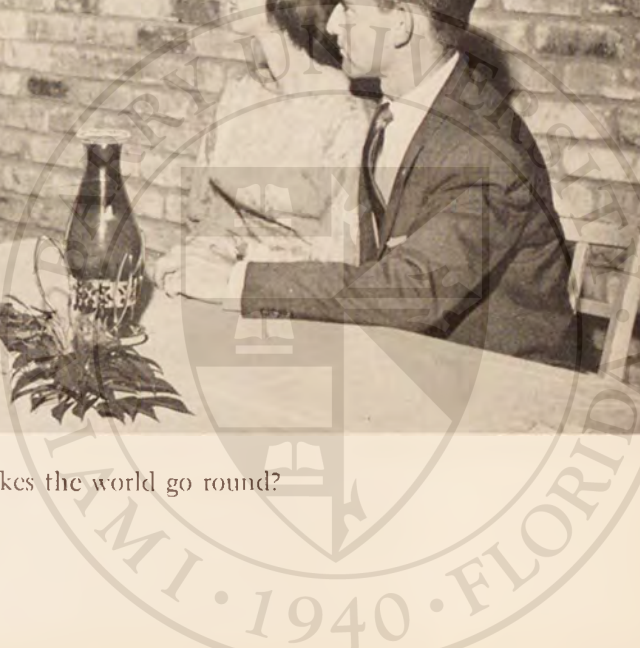


SOCIAL BOARD

Isabelle Hutchison, Sandra Hovey, Edwina Scanlon, Jackie Crippen, Margo O'Connor, Rita Riopel, Loretta Matus, Roseen Rindone, Rose Villalba.



What makes the world go round?





NURSING ASSOCIATION

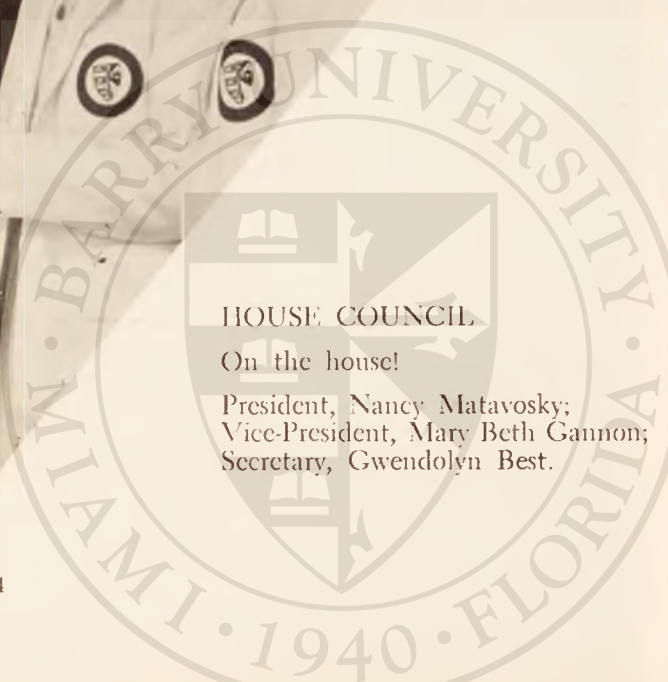
Florence Nightingales
of Our Day

Moderator, Sister Loretta Michael, O.P.; President, Loretta Matus; Vice-President, Carol Cegelski; Secretary, Natalie McCleskey; Treasurer, Judith Gayzik.

SPANISH CLUB

Que Linda!

President, Alicia Raidi; Secretary, Elizabeth Kieps; Treasurer, Evelyn Solis; Social Chairman, Miriam Figueroa.



HOUSE COUNCIL

On the house!

President, Nancy Matavosky;
Vice-President, Mary Beth Gannon;
Secretary, Gwendolyn Best.

RECREATIONAL ATHLETIC ASSOCIATION

Barry Conference on Disarmament

President, Martha Saonchik;
 Vice-President, Sandra Southmayd;
 Secretary, Martha Schwandt;
 Treasurer, Joyce Horacek;
 Social Chairman, Rose Villalba.



DELTA
 SIGMA
 OMEGA

I forgot the lights.

President, Jane Gallagher; Vice-President, Marie Marais; Secretary-Treasurer, Agnes Adamson; Social Chairman, Rita Riopel.

PLAYHOUSE

There are no small parts.

Moderator, Sister Marie Carol, O.P.; President, Kathleen Hastings; Vice-President, Gwendolyn Best; Secretary, Patricia Pennock; Treasurer, Isabella Hutchison; Publicity Chairman, Jane Simons.





STUDENT COUNCIL

All those in favor of the motion
President, Alice Brightbill

ANGELICUS

Meet the press.
Editor, Angela Brandl;
Assistant Editor, Janice Rocchio;
Photographer, Diane Balconis;
Circulation Manager, Marie Burke;
Public Relations, Patricia Bourke.



LAMBDA SIGMA

Completing the circle of our thoughts
Moderator, Sister M. Trinita, O.P.





TARA SINGERS

True songs come from full hearts.
Moderator Sister Maura, O.P.



SOCIOLOGY CLUB

The fun of giving
President, Judith Pace;
Secretary-Treasurer, Mary Beth Gannon.

BETA KAPPA KAPPA

Growing minds in a shrinking world
Moderator, Sister M. Petromilla, O.P.;
President, Carol Ann DeMarco;
Vice-President, Margaret O'Connor;
Secretary-Treasurer, Janice Rocchio.





HOME ECONOMICS CLUB

The science of homemaking

Moderator, Sister M. Eulalia, O.P.; President, Barbara McCabe; Vice-President, Marcia Crawford; Secretary, Marie Maraia; Treasurer, Digna Irizarry; Social Chairman, Marie Burke; Pictured, Evelyn Solis.



WHO'S WHO IN AMERICAN COLLEGES AND UNIVERSITIES

Leadership—Scholarship—Service

Sandra Hovey, Mary Ann Coomes, Mercedes Molina, Loretta Matus, Jane Gallagher, and Alice Brightbill.



SECRETARIAL SCIENCE CLUB

A mechanical puzzle

Alicia Raidi and Gisela Corrales

CULTURE SERIES

Frank Sheed—Theology—Enraptured Audience



TORCH AND SHIELD

Trio of Assistants

Typist, Louise LaJeunesse; Literary, Mercedes Molina;
Photography, Judith Pace.



TORCH AND SHIELD

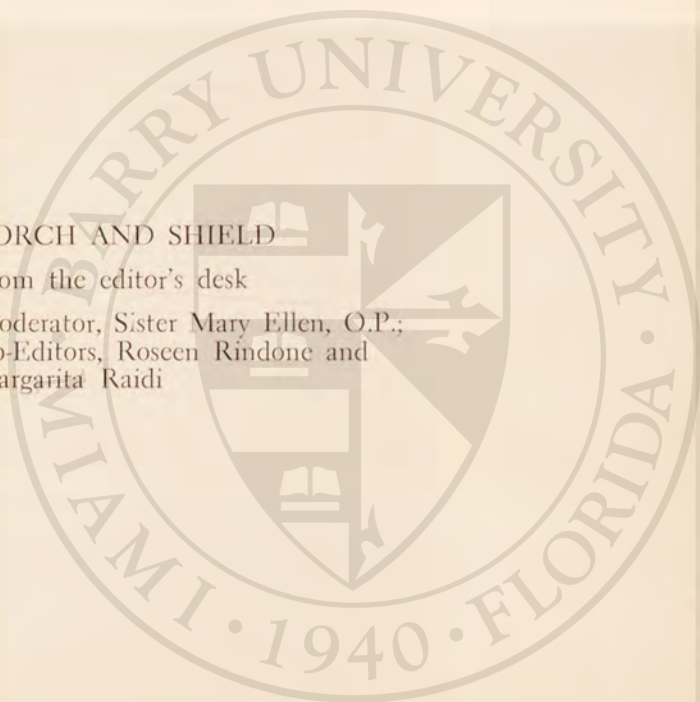
Only 117 pages to go!

TORCH AND SHIELD

From the editor's desk

Moderator, Sister Mary Ellen, O.P.;

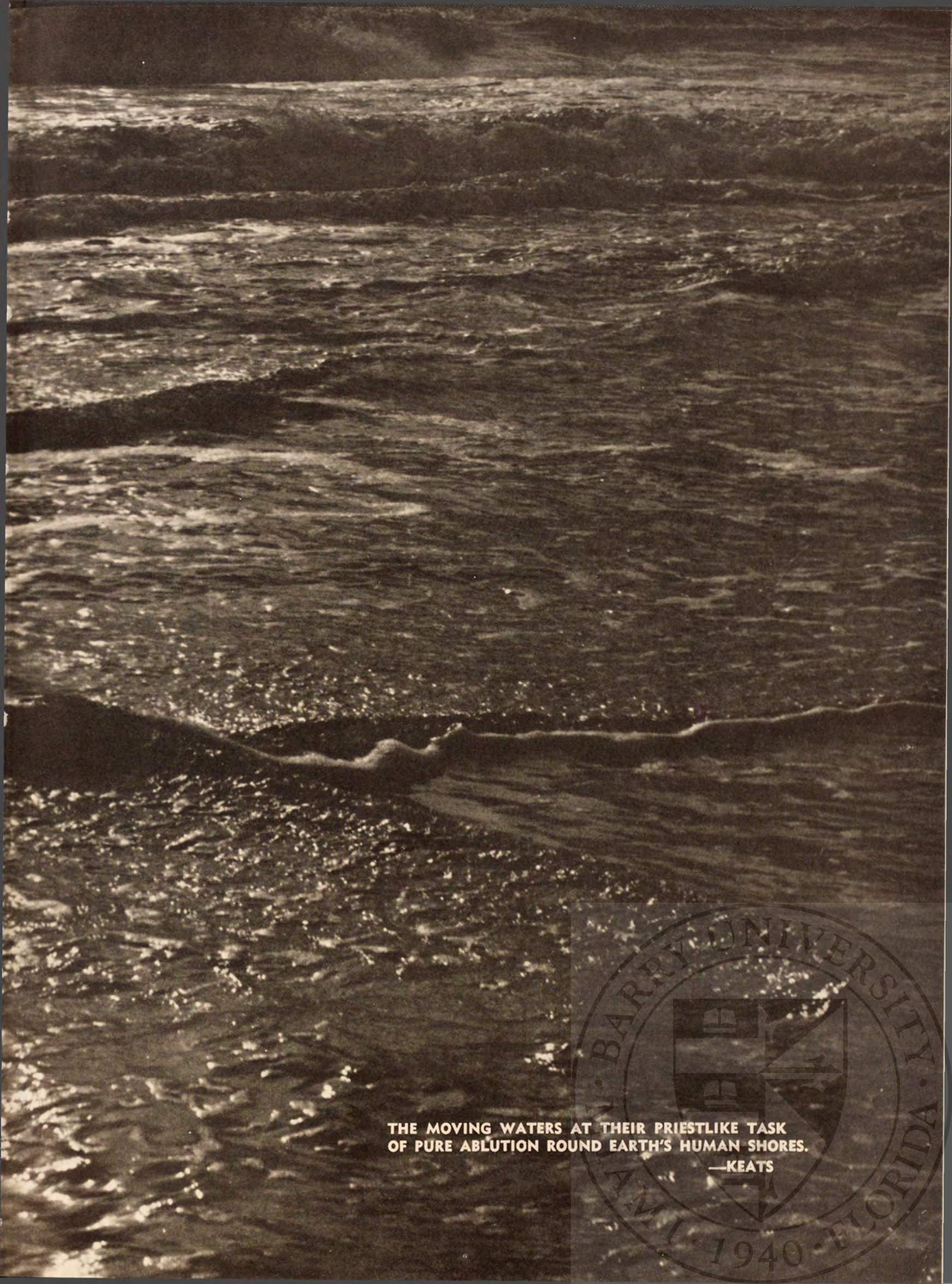
Co-Editors, Roseen Rindone and
Margarita Raidi



SENIOR PH







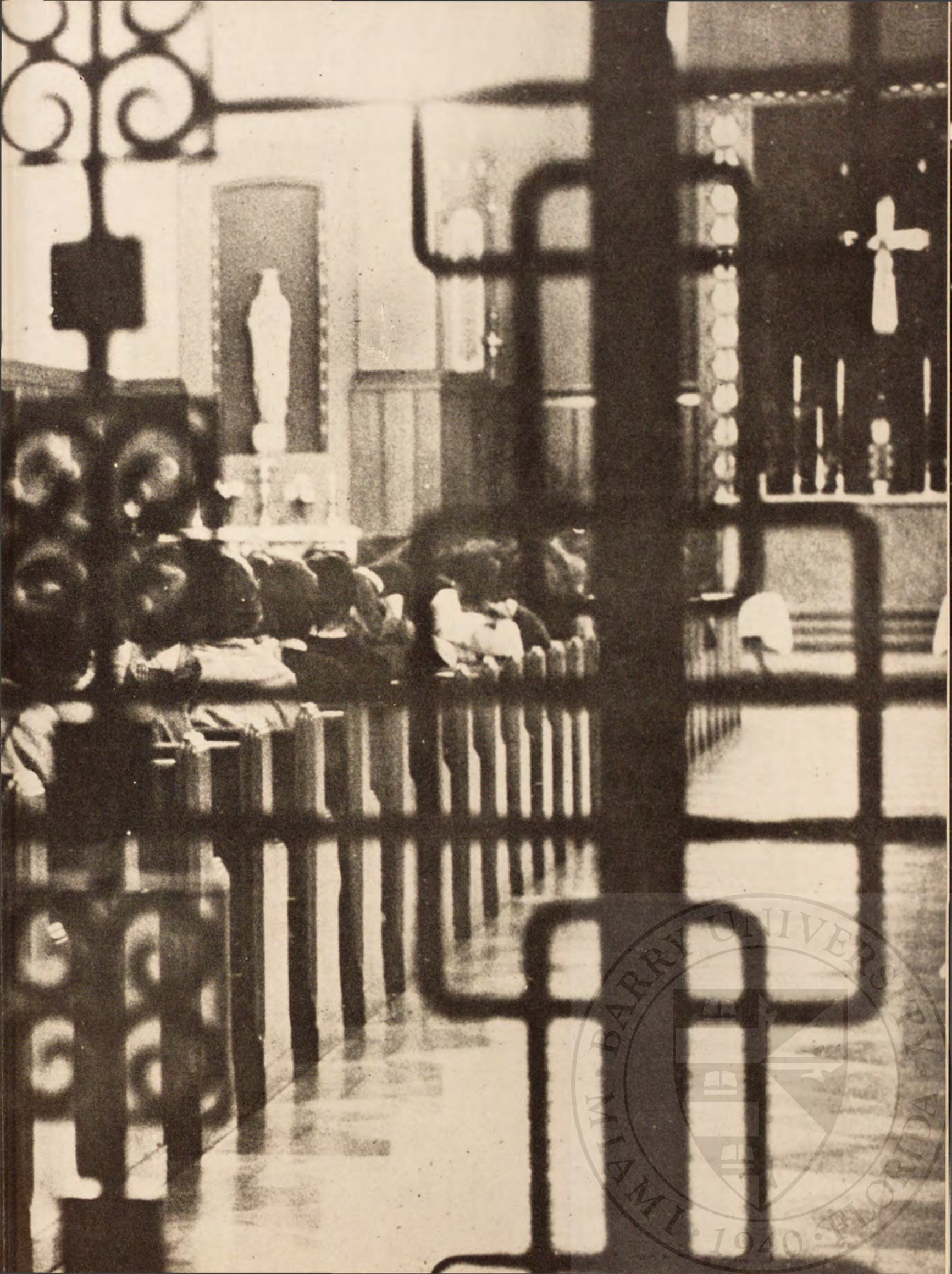
THE MOVING WATERS AT THEIR PRIESTLIKE TASK
OF PURE ABLUTION ROUND EARTH'S HUMAN SHORES.
—KEATS



CLEANSING WATER,
RENEWER OF SOULS,
DAWN OF GOD'S SMILE ON SHATTERED COASTLINES;
TRANSFORMING WATER,
PERFECTOR OF SOULS,
NOON OF GOD'S FAVOR ON SHRIVEN BEACHES.

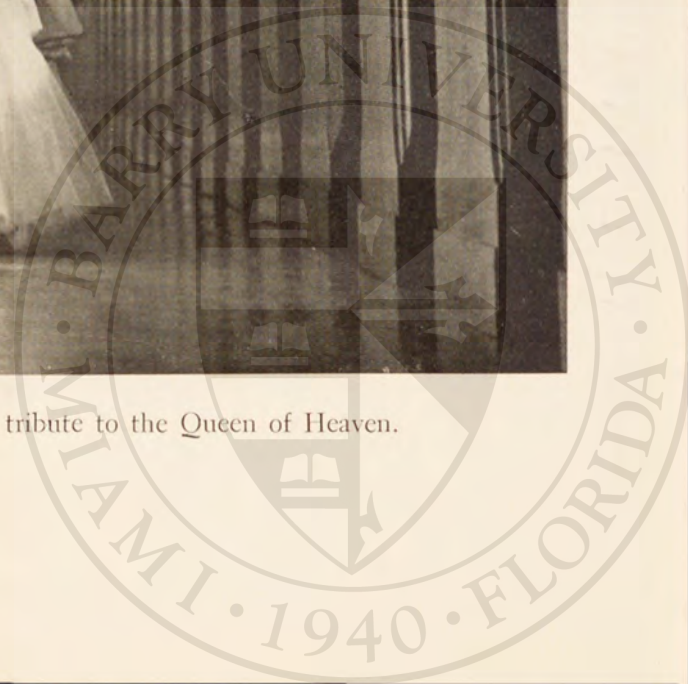
—MERCEDES MOLINA







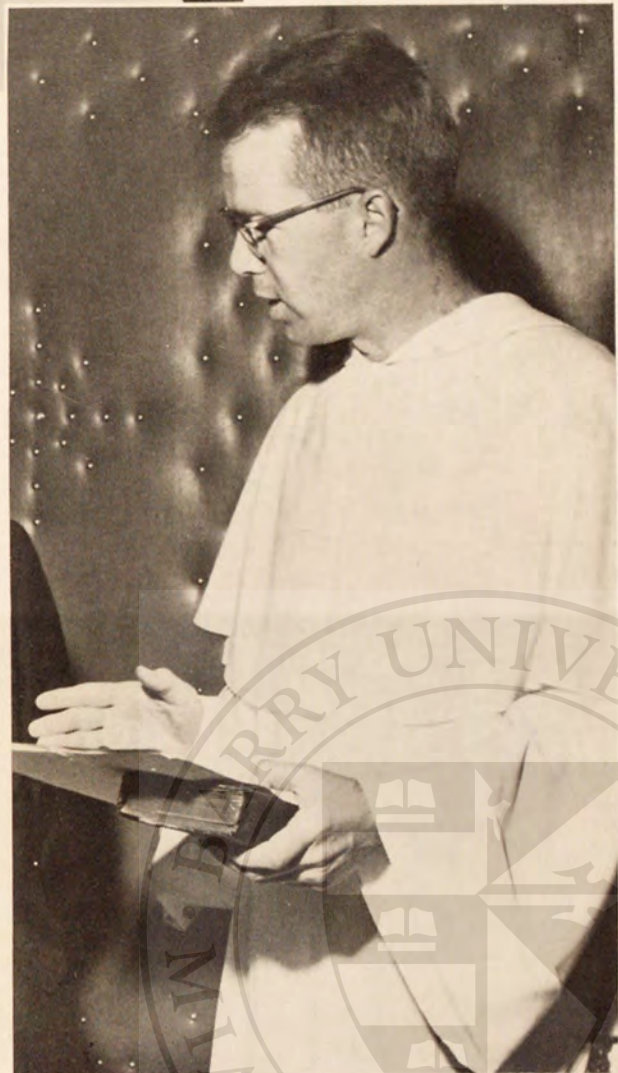
Mercedes Molina, Sodality Prefect, presents a floral tribute to the Queen of Heaven.





Father O'Leary

*The power of the written
and the spoken word.*



Father Egan



MISSION COUNCIL

A world wide field for the missions.

CONFRATERNITY OF CHRISTIAN DOCTRINE

Knowledge of God inspires love.



SODALITY COUNCIL

Pray this week for Prefect, Mercedes Molina; Vice-Prefect, Mary Ann Coomes; Secretary, Margaret O'Connor; Treasurer, Rebecca Holcomb.

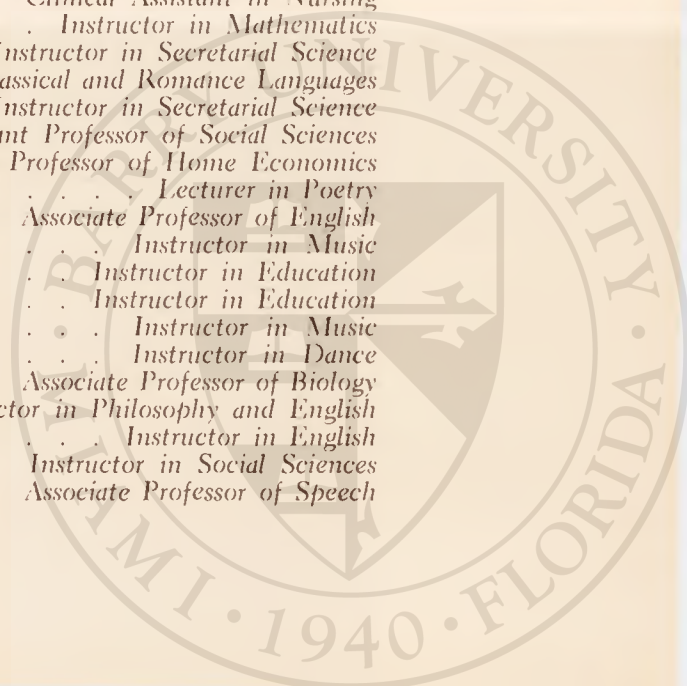


ADMINISTRATION

Reverend Mother Mary Gerald, O.P.	President
Sister Mary Alice, O.P.	Vice President
Sister M. Trinita, O.P.	Dean
Sister Grace Ellen, O.P.	Dean of Students
Sister Peter Claver, O.P.	Registrar
Sister M. Christopher, O.P.	Treasurer

FACULTY

Sister Mary Adrian, O.P.	Cataloger
Sister Agnes Louise, O.P.	Instructor in Biology
Mrs. Ruth Ajello, R.N.	Instructor in Nursing
Sister Mary Alice, O.P.	Associate Professor of English
Sister Alma Marie, O.P.	Instructor in Biology
Sister Ann Thomas, O.P.	Instructor in Education
Mrs. Lourdes Arenas	Circulation Librarian
Sister Mary Arnold, O.P.	Assistant Professor of History
Sister Marie Carol, O.P.	Assistant Professor of English and Speech
Sister M. Carolyn, O.P.	Associate Professor of Nursing
Sister M. Christopher, O.P.	Instructor in Secretarial Science
Sister Marie Claudia, O.P.	Associate Professor of Education
Marquesa de Colometta	Instructor in Creative Writing
Sister Mary Damian, O.P.	Instructor in Art
Dr. F. Foster Dye, M.D.	Lecturer in Obstetrical Nursing
The Reverend John Martin Egan, O.P.	Instructor in Philosophy
Sister Mary Ellen, O.P.	Instructor in English
Mrs. Rosa Emis	Instructor in Russian
Dr. George Erickson, M.D.	Lecturer in Public Health
Sister M. Eulalia, O.P.	Professor of Home Economics
Mrs. Constance Lee French	Assistant Professor of Library Science
Sister M. Genevieve, O.P.	Instructor in Biology
Sister Grace Ellen, O.P.	Instructor in English and Journalism
Miss Letha Horton	Reference Librarian
Miss Margaret Husson	Associate Professor of Physical Education
Sister James Claudia, O.P.	Instructor in Education
Sister Marie Joannes, O.P.	Associate Professor of Chemistry
Sister Mary Joseph, O.P.	Assistant Professor of Art
Sister Joseph Margaret, O.P.	Assistant Professor of Sociology
Sister M. Kenneth, O.P.	Instructor in Spanish
Miss Gloria Klee	Assistant Professor of Physical Education
Miss Jane Lee, R.N.	Instructor in Psychiatric Nursing
Mrs. Ellen Leader	Instructor in Spanish
Sister Loretta Michael, O.P.	Director and Assistant Professor of Nursing
Miss Margaret McCrory	Instructor in French
Sister M. Maura, O.P.	Assistant Professor of Music
Sister Michael Catherine, O.P.	Instructor in Social Sciences
Miss Grace Merino	Assistant Registrar and Instructor in Spanish
The Reverend Louis M. O'Leary, O.P.	Professor of Theology and Philosophy
Miss Marie Oscar, R.N.	Instructor in Nursing
Miss Linda Paimi, R.N.	Clinical Assistant in Nursing
Sister Paul James, O.P.	Instructor in Mathematics
Sister Peter Claver, O.P.	Instructor in Secretarial Science
Sister M. Petronilla, O.P.	Professor of Classical and Romance Languages
Mrs. Mabel W. Phelps	Instructor in Secretarial Science
Miss Adelita Quejado	Assistant Professor of Social Sciences
Mrs. Elizabeth R. Radcliffe	Assistant Professor of Home Economics
Mrs. Vivian Laramore Rader, Poet Laureate	Lecturer in Poetry
Sister Robert Louise, O.P.	Associate Professor of English
Sister Marie Rosaria, O.P.	Instructor in Music
Sister Rose Germaine, O.P.	Instructor in Education
Sister Ruth Albert, O.P.	Instructor in Education
Mrs. Barbara Slate	Instructor in Music
Miss Olga Suarez	Instructor in Dance
Mr. Frank Sivik	Associate Professor of Biology
Sister Thomas Aquin, O.P.	Instructor in Philosophy and English
Sister Thomas Catherine, O.P.	Instructor in English
Mr. Joseph Tierney	Instructor in Social Sciences
Sister M. Trinita, O.P.	Associate Professor of Speech





BARRY
COLLEGE



